



Inside This Issue.....

Officers & Board 2
President's Corner

Upcoming Field Trips 3
Announcements & Tidbits

Continuation of Lead Article 4

Meeting Programs & Rock Swap Schedule 5

September Birthdays 6
Web Stats

2009 Meeting Dates & Deadlines

Schedule of Regional Rock & Gem Shows 7

SFMS September Field Trip Info 8

July '09 Board Meeting Notes 9

July '09 Membership Meeting Notes

Monthly Calendar 10

Newsletter Awards

Black Rock

on the road to dolomite and calcite



WC McDANIEL: June 20th arrived early and hot for about 70 MAGS members as the twice postponed trip to the Vulcan Quarry near Black Rock, Arkansas became a reality. The first stop was at a roadside rest stop about 110 miles from Memphis where folks lined up to sign the MAGS liability waiver form, checked out "the facilities" and await the departure to the quarry. The next stop was about one mile down the road to the mine entrance. Once again members lined up to sign the Vulcan Quarry waiver form and by that time most people had remembered who they were and why they were up early in the almost summer heat. The next and last journey was about ¼ mile down into the earth traveling a switch back type road to the floor of the mine.

Several quick observations were noted. First, the floor was about 150 feet lower that it was on the last collecting trip (four years ago), the absence of a blasting smell (boo) was noticeable as they had not blasted in sometime and the bottom was caked in dry limestone mud evidence of the recent flooding that resulted in the postponed trips.

(continued on page 4)

2009 – 2010 Officers and Board of Directors

President – W.C. McDaniel ♦ 2038 Central Ave., Memphis, TN 38104 ♦ 901-274-7706 ♦ w.c.mcd@worldnet.att.net

1st VP (Field Trips) – Mike Wheeler ♦ 5764 Heatwood Drive, Bartlett, TN 38135 ♦ 901-383-82256 ♦ mike.wheeler@shelbycountyttn.gov

2nd VP (Programs) – Paul Sides ♦ 1062 C.R. 739, Wynne, AR 72396 ♦ 870-208-9586

Secretary – Carol Lybanon ♦ 2019 Littlemore Dr., Cordova, TN 38016 ♦ 901-757-2144 ♦ lybanon@earthlink.net

Treasurer – Doris Johnston Jones ♦ 409 Bradford Trail Cove, Collierville, TN 38017 ♦ 901-832-0437 ♦ darjohnston@aol.com

Director (Asst Field Trips) – Robert Duncan ♦ 926 Joel, Memphis, TN 38127 ♦ 901-251-6719 ♦ agatized50@aol.com

Director (Asst Programs) – Sandy Ward ♦ 5119 Whiteway Drive, Memphis, TN 38117 ♦ 901-684-1819 ♦ sandy.pepperspray@comcast.net

Director (Youth) – Ron Brister ♦ 3059 Old Brownsville Road, Bartlett, TN 38134 ♦ 901-388-1765 ♦ bristerr@bellsouth.net

Director (Asst Youth) – Alan Schaeffer ♦ 6854 Corsica Drive, Memphis, TN 38120 ♦ 901-753-8496 ♦ dayday91@aol.com

Director (Librarian) – Ron Brister ♦ 3059 Old Brownsville Rd., Bartlett, TN 38134 ♦ 901-388-1765 ♦ ronald.brister@Memphistn.gov

Director (Membership) – Neville Mayfield ♦ 7782 Bill Knight Ct., Millington, TN 38053 ♦ 901-872-6761 ♦ emayfiel@localnet.com

Director (Historian) – Nannett McDougale-Dykes ♦ 106 Maple Street, Stanton, TN 38069 ♦ 901-412-9357 ♦ redchesty@yahoo.com

Web Coordinator – Mike Baldwin ♦ 367 North Main St., Collierville TN 38017 ♦ 901-853-3603 ♦ mbaldwin05@gmail.com ♦ rockclub@earthlink.net

Newsletter Editor – Shelby Hartman ♦ 5116 Whiteway Dr., Memphis, TN 38117 ♦ 901-626-1920 ♦ magsnewsletter@comcast.net

Show Chairman – Vacant

Rockhound News is published monthly by and for the members of Memphis Archaeological and Geological Society. Please send your comments and articles to the attention of Shelby Hartman, 5116 Whiteway Drive, Memphis, TN 38117 or via email at magsnewsletter@comcast.net

President's Corner



- **www.memphisgeology.org** - is the number one web site in the Southeast Federation of Mineralogical Societies and number two in the nation as determined by the recent American Federation of Mineral Societies web site contest. Congratulations and thanks to Mike Baldwin on a job well done!
- **Field trips**- The club's new field trip team of Mike Wheeler and Robert Duncan are on board. A complete schedule for 2009 has been developed and published in this edition of the newsletter. Be sure to check out the schedule. One of the most intriguing and MAGS members' favorite site is a New Year's day/weekend trip to Potosi, Mo. Forget about football, black-eyed peas and walk off those Christmas pounds by collecting druse quartz, barite and lace agates. Reminder nonmembers are not permitted to attend or participate in MAGS field trips.
- **\$100**- Find us a new site for field trips and once a field trip is scheduled and completed the club will give you a \$100 bill.
- **Show** –The planning for the 2010 show is underway. Get ready to help your club and the Show. Our most immediate need is lots of gem dig and grab bag material. Look for a collecting plan soon.
- **Show Tickets**- Several MAGS members have not paid for their 2009 tickets. Delinquent names will be published in the October newsletter.
- **Grant**-MAGS has provided a grant, almost \$1,000, to Chucalissa for the printing of brochures used in their education program for children, The MAGS logo and show info will be credited on the brochure.
- **Auction**- the membership meeting will have an auction. Material and source to be determined.

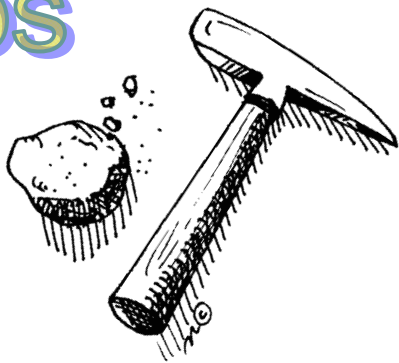
W.C. McDaniel

Comments or Questions regarding MAGS?

Contact W.C. McDaniel, MAGS President, by phone at (901) 274-7706, by mail at 2038 Central Avenue, Memphis, TN 38104, or by email at w.c.mcd@worldnet.att.net.

Check out the clubs website at www.memphisgeology.org

MAGS Field Trips



September 27 (Sun) We will be heading to Mississippi for fossils. In the morning we will be at Birmingham Ridge for Exogyra Shells (big ones), and in the afternoon we will go to a club favorite in Frankstown—Twenty-mile Creek— for shark teeth, Must get wet to collect!

October 17-18 (Sat/Sun) We'll stay in Tennessee this month as we travel to Dale Hollow Lake for geodes and fossils. We will also be exploring a new geode site on Saturday that reportedly has never been collected. There's a fee of \$10/bucket and it's located close to the Pharris farm in Nameless, TN. That is the town's name.

November 7-8 (Sat/Sun) Crystals in Mt. Ida, Arkansas with Fiddlers Ridge on Saturday and "group choice" on Sunday!

November 28 (Sat) Richardson Landing (southwest of Millington, TN). We will be collecting agates/chert, fossils, petrified wood and river artifacts.

January 1- (Fri-Sun), Potosi, Missouri. We don't do this one often so don't miss it! Ring in the new year collecting Druze Quartz, Barite, Lace Agate. (We will keep an eye on the weather).

There are some possible weekday trips in the works and will be announced as they develop.



Announcements & Tidbits

ESTATE SALE

Estate of George Fulghum, MAGS Life Member @ 391 North Highland. Rocks and Minerals, household goods, lots of tools (more than a Home Depot). Friday, September 18 through Sunday, September 20 9/18 (8a-4p each day). Please remember Highland is a busy four lane street with limited parking. There is no parking on side of street where house is located. Be careful!

FIELD TRIPS

One last reminder: Due to liability reasons, you must be a MAGS member to attend a MAGS field trip.

SHOW TICKETS

There are some members who still owe for tickets they obtained for friends/family for the 2009 Show. Please pay this as soon as possible to Dick McKitrick. Make checks payable to "MAGS Show Account" and mail to 5431 Brantford Road, Memphis, TN 38120.

NEW MEMBERS

MAGS welcomes new members Phillip Magbee & his sons Daniel and David; Wain & Dorothy Poole; Renee and Craig Morehead; Heather Baldick; and Emily Blanchard. We look forward to seeing you at meetings and on upcoming field trips!

"Black Rock" (continued from front page)

MAGS members, decked out in hard hats, safety glasses and steel toed shoes, assembled at the bottom of the quarry and listened as Bob Ball, our gracious host, gave us an orientation to our collecting site parameters and safety procedures.



Photo: James Johnston. limestone with vug of dolomite

As the sun higher and hotter the MAGs members spread out in several directions. Some went to the berms; others went higher in the pit to search. One group headed to the section that was searched during the last visit. All were in search of the minerals of Black Rock.

The number one reason rockhounds go to Black Rock is to collect its world famous pink dolomite. Pinkest of pink, the mineral is usually widely available and occasionally will have the nice calcite points and small chalcopyrite on the surface. The group photo of the specimens (bottom left) were collected in 2004.

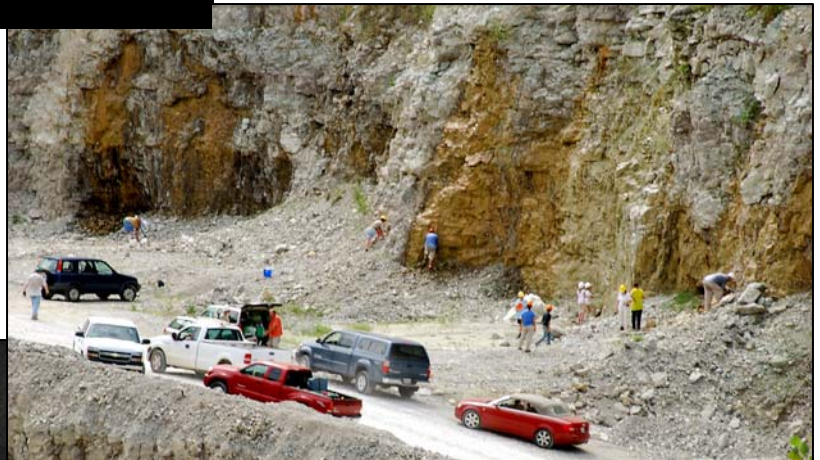


Photo: James Johnston. This location was the floor in 2004, it continues to produce nice specimens



Photo: Cornelia McDaniel. dolomite (pink), clear/yellow/white calcite, black specs chalcopyrite

MEMBERSHIP MEETING PROGRAM & ROCK SWAP SCHEDULE

Month	Adult Program	Junior Program	Rock Swap *
September	Pleistocene of Northeast, Arkansas with Bill Pryor	Molds and casts with Carol Lybanon	September 12 11a-3p At the home of David and Beth Day 5974 Ivanhoe Bartlett, TN Phone: 901-387-2347
October	Lapidary workshop (Polishing, beading, etc.)	Fluorescents with Alan Schaeffer and Mike Baldwin Field trip on 10/3 @ 5pm to Levitt Shell for "Mammoth Follies" (See info below)	None scheduled
November	Tennessee geodes with Mike Gibson	TBA	November 14 11a-3p At the home of Alan & Alishia Parks 831 West Powell Collierville, TN Phone: 901-853-6898
December	Holiday Party	Holiday Party	None scheduled

*Remember, if you are attending one of our scheduled Rock Swaps, please bring a side dish or dessert (enough for your party and some to share with the rest of the group) and your drinks. Also, it is suggested that attendees bring lawn chairs and whatever you will need to display if plan on swapping or selling.

In **The Mammoth Follies**, the Hudson Vagabond Puppets use puppets of all kinds: enormous dinosaur puppets, hand puppets, body puppets, and rod puppets to dramatize historic and scientific facts about the great age of the dinosaurs! Go to <http://www.hvpuppets.org/studyguides/mammoth/studyguide.pdf> for additional information about this production.

The Hudson Vagabond Puppets



For those of you who have never been to the Levitt Shell, it is a wonderful outdoor venue. You will need to bring a lawn chair or a blanket as there is no seating provided. Coolers are allowed but no glass bottles. There isn't a bad seat in the house! Go to levittshell.org for more information on this wonderful Memphis facility.

September Birthdays

1	Ethan Ferguson	18	Natalie Prodanovich
3	Jason Reeves	18	Anne Warren
3	Lenette Mewborn	19	Karen Schaeffer
5	Emily Fox-Hill	20	Mark Cooper
5	Barry Walther	21	Rachel Griffin
5	Anderson Fields	22	Linda Hendrix
6	Lloyd Marler	23	Park Noyes
7	William Huettel	24	Cecil Perkins
10	Alishia Parks	25	Craig Morehead
11	Deborah Penyak	25	Terri DeVoe
11	Amelia Tummalapalli	25	William Randolph
12	Phillip Maybee	28	Jon Thompson
13	Fred Anderson	28	Bonnie Cooper
13	Alexander Bendele	28	Chad Harkness
14	Michael Wheeler	29	Alan Peterson
14	Rhena South	29	Gunnar Wallace
15	Renee Morehead		
16	Barry McCalla		
17	Flint Loveland		
17	Ivon Clark		
17	Matt Gean		



SHELBY HARTMAN: Sapphire is a variety of the mineral species corundum. Sapphires occur in all colors of the rainbow with the exception of red, which is ruby. The name corundum comes from the ancient Sanskrit "kuruvindam"

while the name "sapphire" comes from the Persian word "safir", meaning "beloved of Saturn." Sapphire is mined in Australia, Sri Lanka and Thailand. Other producers are Burma, Kampuchea, Kenya and Tanzania.

Sapphires are commonly heated to improve their color and reduce cloudiness that is caused by rutile inclusions. The rutile inclusions are responsible for the "star" or "cat's eye" in star sapphires.

2009 Meeting Dates

Month	Board Meeting	Membership Meeting	Due Date for Newsletter Submissions
September	Sep 03	Sep 11	Aug 15
October	Oct 01	Oct 09	Sep 15
November	Nov 05	Nov 13	Oct 15
December	Dec 03	Dec 11	Nov 15

Web Site Statistics for July 2009

a brief look at our website (www.memphisgeology.org) since 1/21/02

Total Visits & Hits

Total visits to web site since 1/21/02	377,191
Total hits to web site since 1/21/02	1,619,582
Visits in past 30 days	4,183
Hits in past 30 days	31,378

Top page views past 30 days

eris	1,283 hits
rocknews0509	469 hits
rocknews1005	448 hits
rocknews0107	379 hits

Note: A visit is every time someone comes to our web site. A hit is every page viewed once a user enters our web site.

2009 ROCK CLUB SHOWS ACROSS THE REGION

September 11-13, 2009, Winston-Salem, NC - Forsyth

Gem and Mineral Club. 38th Annual Gem and Mineral Show, Coliseum Annex Building, Dixie Classic Fairgrounds, Gate #9 from 27th Street. Hours: 11th & 12th, 10:00 A.M.–7:00 P.M.; 13th, 12:00 Noon–5:00 P.M. Contact: W.A. Marion, 1163 Bear Creek Church Rd., Mocksville, NC 27028 or MarionA1@yadtel.net.

September 18-20, 2009, Jacksonville, FL– Jacksonville Gem and Mineral Society.

21st Annual Gem, Mineral, Jewelry, Fossil, Bead Show and Sale AND SFMS Annual Meeting and Banquet. Morocco Temple, 3800 St. Johns Bluff Road S. Contact: Tom Frame at tomframe@comcast.net.

October 3-4, 2009, Lexington, KY - Rockhounds of Central Kentucky.

19th Annual Gem, Mineral, & Jewelry Show & Sale. Kentucky National Guard Armory, 4301 Airport Rd. Hours: 3rd, 10:00 A.M.- 6:00 P.M.; 4th, 12:00 Noon-5:00 P.M. Contact: Kay Fisher, 859.537.1776, kkay19@aol.com.

October 16-18, 2009, Franklin, NC - Gem & Mineral Society of Franklin and the Franklin Chamber of Commerce.

Annual Leaf Looker's Gemboree. Hours: 16th & 17th, 10:00 A.M.-6:00; 18th, 12:00 Noon-5:00 P.M. Call 1.800.336.7829 for further information.

October 31 – November 1, 2009, Stuart FL– St. Lucie County Rock & Gem Club.

31st Annual Rock & Gem Show. Martin County Fairgrounds, 2616 SE Dixie Hwy. (A1A). Hours: 10:00 A.M.–5:00 P.M. both days. Discount coupon at lcrockandgem.org. Contacts: Dennis Ponte at 772.288.9296 or Norm Holbert at 772.873.0787.

November 13-15, 2009, Pascagoula, MS – Mississippi Gulf Coast Gem & Mineral Society.

19th Annual Magnolia State Gem, Mineral and Jewelry Show. Civic Center Building, Jackson County Fairgrounds. Hours: 13th & 14th, 10:00 A.M.–6:00 P.M.; 15th, 10:00 A.M.–5:00 P.M. Contact: John Wright, 3304 Nottingham Rd., Ocean Springs, MS 39564 or 228.875.9192.

November 13-15, 2009, Louisville, KY – KYANA Geological Society.

Annual Mineral, Fossil, Gem, and Rock Show. Resurrection Lutheran Church Gym, 4205 Gardiner View Ave. Hours: 13th, 10:00 A.M. – 7:00 P.M.; 14th, 8:00 A.M. – 7:00 P.M.; 15th, 12:00 Noon – 6:00 P.M. Contact: Mike Whitehouse, 4304 Winter Park Dr., Louisville, KY 40218; 502.905.4988, or kyanageo@gmail.com.

November 21-22, 2009, West Palm Beach, FL – Gem & Mineral Society of the Palm Beaches.

43rd Annual Gem, Jewelry, Mineral & Fossil Show, Americraft Expo Center at the South Florida Fairgrounds, 9067 Southern Blvd. Hours: 21st, 9:00 A.M.– 6:00 P.M.; 22nd, 10:00 A.M.– 5:00 P.M. Contacts: Barbara Ringhiser at bar5678@aol.com or 561.588.5458/ Ellen Jean at ellen-jean24@aol.com or 931.372.8236.

November 27-29, 2009, Mobile, AL – Mobile Rock and Gem Society.

15th Annual Jewelry, Gem and Mineral Show, Greater Gulf State Fairgrounds, Cody Rd and Zeigler Blvd. Hours: 27th, 2:00 PM.– 7:00 P.M.; 28th, 9:00 A.M.– 6:00 P.M.; 29th, 10:00 A.M.– 5:00 P.M.; Contact: Jerry Shirey, 2911 Pretty Branch Drive W., Mobile, AL 36618; 251.786.4777, or Rockhoundjs@aol.com.

**The Southeast Federation of Mineralogical Societies, Inc
The Friendly Federation - Founded in 1976 to serve.**

**DMC Program of the SFMS Field Trip Committee
An Official Field Trip of The Cobb County Gem & Mineral Society, Marietta, GA (HOST)
An Official Field Trip of the Memphis Archaeological and Geological Society**

**9:00 AM, Saturday, September 26, 2009
Blue Ridge, GA**

**FEE AREA: Fee - \$10 each adult/children free
Pets: allowed on leash**

COLLECTING: Large Almandine Garnets

Tools: Bring a shovel and a bucket. You may possibly want to use a screen. Sun screen, bug spray, hat, sack lunch and plenty of liquids are recommended. As always, if you dig a hole- fill it in when you are finished.

Meet: At our old location going to the Hackney Farm in the center of Blue Ridge GA. There is a McDonalds on the North East corner of GA 5. There is a large parking lot there with a movie house behind and to the west of the McDonalds. Traveling North from Atlanta you take I-75 north. Follow the split to I-575 and keep driving North. The road will change to GA 5 and GA 515. It is the same road so keep driving. Go past Ellijay and keep driving to Blue Ridge. GA 5 will make a left here and that is where you will find our meeting place to caravan to the site. It is about 1&1/2 hours from Atlanta.

George Libby - Field Trip Chair, Cell 678-910-7476, Email Onsiteinatlanta@yahoo.com

"Field trips are open to all members of associated clubs of the DMC program of the SFMS Field Trip Committee and to all members of SFMS member clubs who have provided their membership with SFMS liability insurance. Because of insurance requirements, members of the GENERAL PUBLIC are NOT invited on this or any DMC program field trips!"

DMC Program / SFMS Field Trip committee's purpose: To collect field trip information from it's member societies; schedule and coordinate field trip dates; disseminate field trip information to all member clubs so that each member society may publish this information as one of their "official" scheduled field trips.

Please reply by e-mail to: dmc@gamineral.org
World Wide Web site for the DMC is: <http://www.gamineral.org/dmc.htm>

DMC is a program of the Field Trip Committee of the Southeast Federation of Mineralogical Societies, Inc.
Copyright © All rights reserved.

"Earth first...we'll collect on the other planets later.

July Board Meeting Notes Carol and Matthew Lybanon

Meeting held July 2 at the St. Francis Hospital St. Clare Room and called to order at 6:46 P. M. by Vice-President Paul Sides. Attended by Ron Brister, Doris Jones, Kimberly Loveland, Carol Lybanon, Matthew Lybanon, Neville Mayfield, Alan Schaeffer, Paul Sides, and Phillip Loveland. **Secretary's Report:** The May and June minutes were approved. **Treasurer's Report:** A letter was received from the IRS granting an extension to August 15 for filing the Exempt Organization Return for 2008. The Treasurer's Report was approved subject to audit. **Membership's Report:** The Board approved two applications, for Howard & Victoria Bromley & children, Shawn Stewart-Pool & Terry Pool & son. A draft of a revised membership application was submitted to the board for approval. New member packets that are not picked up in a month or two will be mailed. **Field Trips' Report:** Paul Sides thinks we need knowledgeable people to lead our field trips, which should be educational experiences as well as opportunities to collect. **Junior Programs:** The Board authorized Kimberly Loveland to spend up to \$200 for activities the kids can use if the Junior program finishes early. **Show Report:** Phillip Loveland reported several complaints from Boy Scouts, who thought they would receive samples of the 10 different minerals they need for the Geology Merit Badge and were disappointed to find that the grab bags generally didn't have that many. He recommended that next year we work to prevent the misunderstanding When the Show Chairman position vacancy was discussed, The Board discussed whether job descriptions for all Officers and Directors should be available more openly to Members. Alan Schaeffer suggested a 2-year obligation for Show Chairman and Assistant Chairman; as other clubs do, to provide continuity (Assistant becomes Chairman next year). A motion to give \$25 Borders gift certificates to each Show Committee member (\$50 for Alan Parks) passed. **Library Report:** Ron Brister thanked the Board for allowing him time off to handle family business, and thanked David Day for taking care of the library. He reiterated the need for more storage. Paul Sides will ask W. C. McDaniel to see if we can get more space for the cabinets at the church. Ron says we need four new cabinets. **Newsletter:** Mike Baldwin reported via email that the July newsletter will be late. **Webmaster:** Mike's email reported that web pages will be updated when the newsletter is completed. **Old Business:** Neville Mayfield showed a new member welcome letter draft written by W. C. McDaniel,

led a discussion of what new member packages should contain, passed around two versions of a proposed new MAGS letterhead, and proposed we should invest unused funds in certificates of deposit with a range of periods. **New Business:** Ron Brister asked MAGS to increase its association to Chucalissa by volunteering and by providing financial assistance. An email from W. C. McDaniel reminded the Board we must vacate the old storage shed by July 31. Paul Sides will try to get a trailer from Memphis Stone & Gravel. The meeting was adjourned at 9:01 P. M.

July Membership Meeting Notes Carol and Matthew Lybanon

The MAGS Membership Meeting at Shady Grove Presbyterian Church was called to order at 7:38 P.M. on July 10. There were 62 Members and 14 visitors present. MAGS accepted an offer from Cooper Moving of a free storage facility in exchange for a sponsorship at the 2010 Show. Two shows were announced: Southeast Gem, Mineral, & Fossil Show, Cartersville, GA, August 14-16; and the Ozark Earth Science Club's show, Mountain Home, AR, August 22 & 23. Alan Parks reported the Show donated \$2,650 to the Ronald McDonald House. Members should check the list to see how much they owe for club Show tickets. Alan Schaeffer presented Borders gift certificates to Show Committee members. W. C. McDaniel reiterated that two vacant Board positions need to be filled soon: 1st Vice-President (Field Trips), and Show Committee Chair. He will take responsibility for field trips for the rest of 2009. Paul Sides reviewed the schedule of programs for the rest of this year, and introduced Dr. David Dockery, who gave a wonderful program on fossil whales that can be found in our area. W. C. McDaniel announced we will no longer permit nonmembers to join any MAGS-sponsored field trips. Displays were presented by club members. The MAGS website is one of seven finalists in the AFMS competition. Neville Mayfield asked that members pick up their membership and library cards; he also has some new member packets. The meeting was adjourned at 8:58 PM.

**A Special Board Meeting briefly took place following the Membership meeting to approve new members, approve Mike Wheeler as 1st VP of Field Trips and discuss liability of non-members attending MAGS sponsored field trips.

The main purpose of Memphis Archaeological and Geological Society is to promote and advance the knowledge of the Lapidary Sciences in the mining, identification, cutting, polishing and mounting of gems, minerals and fossils to the utmost of our geological and lapidary capabilities.

Except for items that are specifically copyrighted by their authors, other societies may use material published in MAGS Rockhound News provided that proper credit is given and the sense or meaning of the material is not changed. Editor: Shelby Hartman, 5116 Whiteway Drive, Memphis, TN 38117

©2006 Memphis Archaeological and Geological Society.

AFMS NEWSLETTER AWARDS: New Editor 7th—95 • Small Bulletin Honorable Mention—04, 05, 06 • Adult Article 10th—04; Honorable Mention—05 (x2), 06 (x2) • Junior Article 3rd—98; 8th—03 • Special Pub 4th—03

SFMS NEWSLETTER AWARDS: New Editor 1st—86; 2nd—88, 97 • New Editor (Explorer) 4th—03 • Certificate of Excellence—89, 90, 91, 92, 93 • Large Bulletin 1st—87 • Small Bulletin 1st—04, 2nd—06, 4th—03, 3rd—07 • Special Publication 2nd—03 • Art 77, 80, 81, 82, 86 • Junior Article 1st—03, 07 • Adult Article 1st—06, 2nd—89, 90, 04, 06; 3rd—92; 4th—85, 04, 07; 5th—91, 03, 07; 6th—87; 8th—04, 07; Honorable Mention—03, 04, 07 • Adult Poetry—07

DUES: \$20 (Family); \$16 (Single); \$8 (Junior)

SEPTEMBER 2009

Sun	Mon	Tue	Wed	Thu	Fri	Sat
		1	2	3	4	5
6	7	8	9	10	11	12
13	14	15	16	17	18	19
20	21	22	23	24	25	26
27	28	29	30			

- | | | |
|---------|-----------|---|
| Sept 3 | 6:30 p.m. | Board Meeting at St. Francis in St. Claire Room behind ER. (5959 Park Ave) REMINDER: NO FOOD! |
| Sept 11 | 7:30 p.m. | Membership Meeting at Shady Grove Presbyterian Church |
| Sept 12 | 11a-3p | Rock Swap at home of David & Beth Day. |
| Sept 27 | TBA | MAGS Field Trip to Birmingham Ridge and Twenty-Mile Creek. More info to be provided at 9/11 Membership Mtg. |



MAGS Rockhound News
5116 Whiteway Drive
Memphis, TN 38117